

## Swing clamps pneumatic, in block version

### SPECIFICATION

#### Coding

- Type **L**: swiveling left
- Type **R**: swiveling right

#### Types

- Type **A**: Clamping arm with slotted hole and 2 flanged washers
- Type **AC**: Clamping arm with slotted hole, 2 flanged washers and GN 708.1 (see page 1625) spindle assembly
- Type **B**: Clamping arm with threaded hole
- Type **F**: Adapter flange
- Type **N**: without clamping arm

Aluminum  
hard anodized  
wear-resistant surface

Double-action air cylinder  
max. pressure 6 bar

Socket cap screw DIN 912  
Steel, zinc plated, blue passivated

Washer ISO 7092  
Steel, zinc plated, blue passivated

- Spindle assembly GN 708.1 (see page 1625) type A
- Steel, zinc plated
- Rubber tip 85 Shore A

### INFORMATION

Swing clamps GN 875 are used when the clamping point for inserting and removing the workpiece must be freely accessible on top.

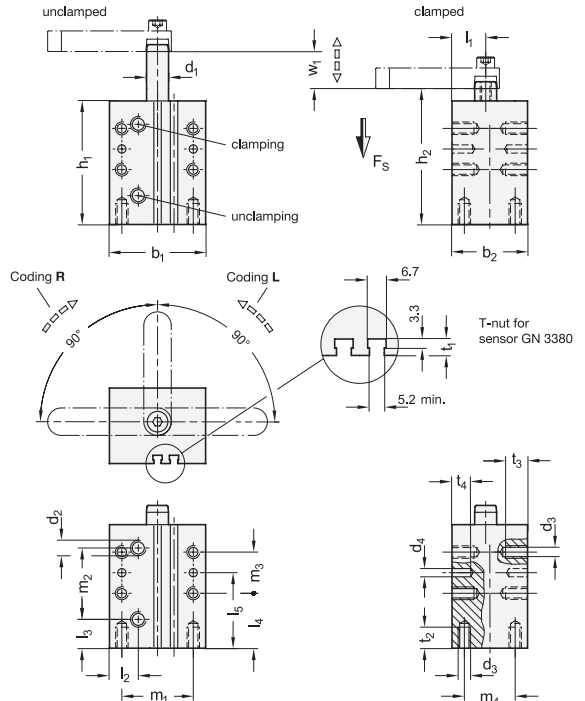
During the clamping action, the arm is first swiveled by 90° and lowered, followed by the linear tensioning motion. The workpiece clamping must take place within the clamping stroke.

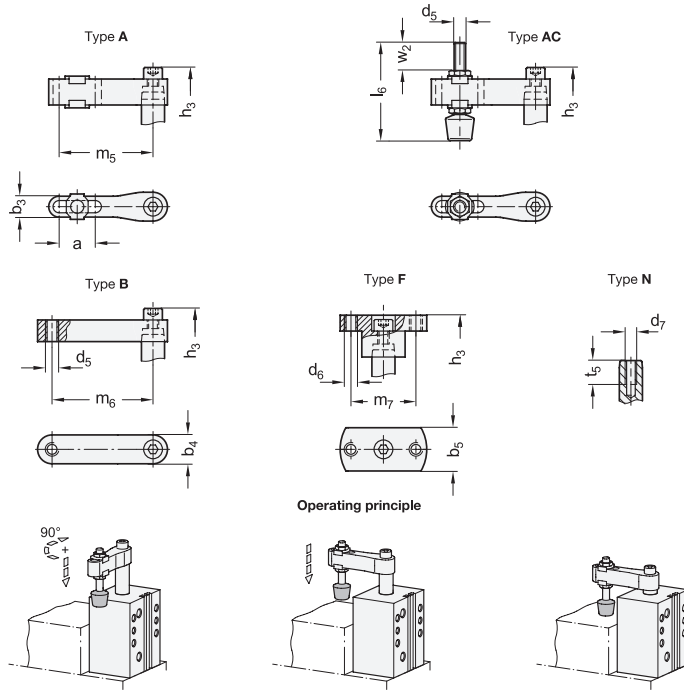
The angle orientation of the tensioning arm can be set arbitrarily during mounting on the swing clamp. When tightening the screw, the piston rod must not experience any torque. The clamping arm must therefore be held to prevent twisting.

The swing clamps are equipped with a magnet ring piston and are therefore pre-fitted for end stop detection via sensor.

### ACCESSORY

- Clamping arms GN 875.2 (see page )
- Clamping arms GN 875.3 (see page )
- Adapter flanges GN 875.4 (see page )
- Sensor GN 3380 (see page )
- Toggle clamp spindle assemblies GN 708.1 (see page 1625)





\* Complete with type index of the horizontal acting toggle clamps

A AC B F N

GN 875

Description	Size	d1	Fs in N	a	b1	b2	b3	b4	b5	d2	d3	d4 H7	d5	d6	d7	h1	h2 ≈	h3 ≈	l1	l2	l3	l4
GN 875-25-14-L-*	25	14	170	20	55	35	11.3	18	25	M5	M8	6	M6	M6	M8	78	82	135	15.5	17	17	33
GN 875-25-14-R-*	25	14	170	20	55	35	11.3	18	25	M5	M8	6	M6	M6	M8	78	82	135	15.5	17	17	33
GN 875-32-16-L-*	32	16	270	25	60	45	14.5	20	30	G 1/8	M8	6	M8	M8	M8	90	95	153	20	18	20.5	40
GN 875-32-16-R-*	32	16	270	25	60	45	14.5	20	30	G 1/8	M8	6	M8	M8	M8	90	95	153	20	18	20.5	40
GN 875-40-16-L-*	40	16	450	25	70	55	14.5	20	30	G 1/8	M8	6	M8	M8	M8	90	95	153	24.5	21	21	40
GN 875-40-16-R-*	40	16	450	25	70	55	14.5	20	30	G 1/8	M8	6	M8	M8	M8	90	95	153	24.5	21	21	40
GN 875-50-20-L-*	50	20	700	30	85	65	17.5	25	32	G 1/8	M10	8	M10	M8	M10	100	105	172	31	26	26	40
GN 875-50-20-R-*	50	20	700	30	85	65	17.5	25	32	G 1/8	M10	8	M10	M8	M10	100	105	172	31	26	26	40
GN 875-63-20-L-*	63	20	1100	30	100	80	17.5	25	32	G 1/8	M10	8	M10	M8	M10	100	105	170	38	30	27.5	40
GN 875-63-20-R-*	63	20	1100	30	100	80	17.5	25	32	G 1/8	M10	8	M10	M8	M10	100	105	170	38	30	27.5	40

GN 875

Description	l4	l5	l6	m1	m2	m3	m4	m5	m6	m7	t1 ≈	t2	t3	t4	t5	w1	w1 Clamping stroke	w1 Stroke	w2	w1 Clamping stroke	w1 Stroke	For toggle clamps		
																						GN 860	GN 862	GN 862.1
GN 875-25-14-L-*	33	48	55	40	44.5	30	20	50	50	38	4.5	15	10	10	14	14	14	27	18	27	18	9	439	
GN 875-25-14-R-*	33	48	55	40	44.5	30	20	50	50	38	4.5	15	10	10	14	14	14	27	18	27	18	9	439	
GN 875-32-16-L-*	40	55	68	45	51	30	30	65	60	45	6	20	15	15	16	14	14	30	21	30	21	18	733	
GN 875-32-16-R-*	40	55	68	45	51	30	30	65	60	45	6	20	15	15	16	14	14	30	21	30	21	18	731	
GN 875-40-16-L-*	40	55	68	52	52	30	37	65	70	45	7.5	20	15	15	16	15	15	30	21	30	21	18	1007	
GN 875-40-16-R-*	40	55	68	52	52	30	37	65	70	45	7.5	20	15	15	16	15	15	30	21	30	21	18	997	
GN 875-50-20-L-*	40	60	77	66	53	40	46	85	80	48	6	20	20	15	16	15	15	32	19	32	19	35	1693	
GN 875-50-20-R-*	40	60	77	66	53	40	46	85	80	48	6	20	20	15	16	15	15	32	19	32	19	35	1689	
GN 875-63-20-L-*	40	60	77	80	53	40	60	85	90	48	7.5	20	20	15	16	15	15	30	19	30	19	35	2359	
GN 875-63-20-R-*	40	60	77	80	53	40	60	85	90	48	7.5	20	20	15	16	15	15	30	19	30	19	35	2371	

Weight type A

