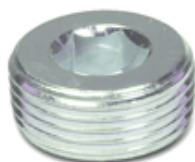


DIN 906

Threaded plugs



technical informations

Material

Steel, blue passivated.
Ultrasonically checked.

Standard versions available

- Version A: without micro encapsulation.
- Version GPC: with micro encapsulation.

Special executions on request

Threaded plugs DIN 906-NI in AISI 303 stainless steel.

Features and applications

Threaded plugs DIN 906 are used to close bore holes with cylindrical internal thread. The tightness depends on the medium, pressure, temperature and material pairing. The design with GPC thread coating provides a higher degree of safety. The official DIN 906 standard sheet also provides for thread sizes M39x2; M52x1.5; M52x2; M56x2 and M60x2.

Standard Elements	Main dimensions			Weight
	Description	d	h	
DIN 906-ST-M8x1-A	M8x1	8	4	2
DIN 906-ST-M10x1-A	M10x1	8	5	3
DIN 906-ST-M12x1.5-A	M12x1.5	10	6	6
DIN 906-ST-M14x1.5-A	M14x1.5	10	7	8
DIN 906-ST-M16x1.5-A	M16x1.5	10	8	10
DIN 906-ST-M18x1.5-A	M18x1.5	10	8	14
DIN 906-ST-M20x1.5-A	M20x1.5	10	10	17
DIN 906-ST-M22x1.5-A	M22x1.5	10	10	22

DIN 906-ST-M24x1.5-A	M24x1.5	12	12	30
DIN 906-ST-M26x1.5-A	M26x1.5	12	12	37
DIN 906-ST-M27x2-A*	M27x2	12	12	40
DIN 906-ST-M30x1.5-A	M30x1.5	12	17	45
DIN 906-ST-M33x2-A*	M33x2	12	17	50
DIN 906-ST-M36x1.5-A	M36x1.5	15	19	86
DIN 906-ST-M36x2-A*	M36x2	15	19	90
DIN 906-ST-M38x1.5-A*	M38x1.5	15	19	100
DIN 906-ST-M42x1.5-A	M42x1.5	18	22	142
DIN 906-ST-M42x2-A	M42x2	18	22	-
DIN 906-ST-M45x1.5-A	M45x1.5	18	22	163
DIN 906-ST-M45x2-A*	M45x2	18	22	160
DIN 906-ST-M48x1.5-A	M48x1.5	20	24	210
DIN 906-ST-M48x2-A*	M48x2	20	24	230
DIN 906-ST-R1/8-A	R1/8	8	5	3
DIN 906-ST-R1/4-A	R1/4	10	7	7
DIN 906-ST-R3/8-A	R3/8	10	8	12
DIN 906-ST-R1/2-A	R1/2	10	10	19
DIN 906-ST-R3/4-A	R3/4	12	12	37
DIN 906-ST-R1-A	R1	12	17	57
DIN 906-ST-M8x1-GPC	M8x1	8	4	2
DIN 906-ST-M10x1-GPC	M10x1	8	5	3
DIN 906-ST-M12x1.5-GPC	M12x1.5	10	6	6
DIN 906-ST-M14x1.5-GPC	M14x1.5	10	7	8
DIN 906-ST-M16x1.5-GPC	M16x1.5	10	8	10
DIN 906-ST-M18x1.5-GPC	M18x1.5	10	8	15
DIN 906-ST-M20x1.5-GPC	M20x1.5	10	10	17
DIN 906-ST-M22x1.5-GPC	M22x1.5	10	10	22
DIN 906-ST-M24x1.5-GPC	M24x1.5	12	12	30
DIN 906-ST-M26x1.5-GPC	M26x1.5	12	12	37
DIN 906-ST-M27x2-GPC*	M27x2	12	12	40
DIN 906-ST-M30x1.5-GPC	M30x1.5	12	17	44
DIN 906-ST-M33x2-GPC*	M33x2	12	17	60
DIN 906-ST-M36x1.5-GPC	M36x1.5	15	19	86
DIN 906-ST-M36x2-GPC*	M36x2	15	19	90
DIN 906-ST-M38x1.5-GPC*	M38x1.5	15	19	110
DIN 906-ST-M42x1.5-GPC	M42x1.5	18	22	143
DIN 906-ST-M42x2-GPC*	M42x2	18	22	140
DIN 906-ST-M45x1.5-GPC	M45x1.5	18	22	165
DIN 906-ST-M45x2-GPC*	M45x2	18	22	180
DIN 906-ST-M48x1.5-GPC	M48x1.5	20	24	209
DIN 906-ST-M48x2-GPC*	M48x2	20	24	230
DIN 906-ST-R1/8-GPC	R1/8	8	5	3
DIN 906-ST-R1/4-GPC	R1/4	10	7	7

DIN 906-ST-R3/8-GPC	R3/8	10	8	12
DIN 906-ST-R1/2-GPC	R1/2	10	10	20
DIN 906-ST-R3/4-GPC	R3/4	12	12	37
DIN 906-ST-R1-GPC	R1	12	17	57

* For sufficient quantities.



ELESA and GANTER models all rights reserved in accordance with the law. Always mention the source when reproducing our drawings.

STANDARD MACHINE ELEMENTS WORLDWIDE